

- NOTES:
1. HARDWARE IS INCLUDED.
 2. SUGGESTED MOUNTING HOLE: $\phi.228$
 3. MAX. MTG. TORQUE IS 6in-lbs.
 4. MAX. REFLOW IS 245°C FOR 5 SEC.
 5. THIS IS A LEAD FREE PRODUCT.

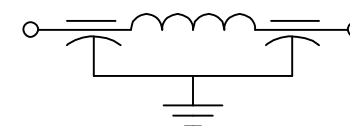


BUSHING FINISH	SILVER
LEAD FINISH	SILVER
CAPACITANCE	5000 pF GMV
TEMP. RANGE	-55°C TO +125°C
CURRENT	10 AMPS
WORKING VOLTAGE	85°C 200 VDC 125°C 100 VDC
DC RESISTANCE	.01 OHMS MAX.

IL=PER MIL-STD-220, NO LOAD

FREQ. MHz	I.L. (db)
10	20
--	
100	65
1 GHz	70
10 GHz	70

SCHEMATIC



CAPACITANCE

PART: S1270F-016

BAG:

1270F-016

DATE CODE

QTY./BAG (200 MAX.)

	01	00	REV. NO.	TOLERANCES UNLESS OTHERWISE SPECIFIED	<p>FAIRVIEW PENNSYLVANIA</p> <p>SPECTRUM CONTROL INC.</p>	Description		
	CN 28890-CPD	CN 26310-CPD	CHANGE NOTICE	Fractions ± 1/64			Dwn. KAUFFMAN	FILTER SING, PI, BSHG.
				Dec. .xx±			Date 6-14-06	
				Dec. .xxx± .010			Engr. STRUCHEN	
				Angles ±0° 30'			Scale NONE	
				CODE IDENT. NO. DLSP2		1270F-016		