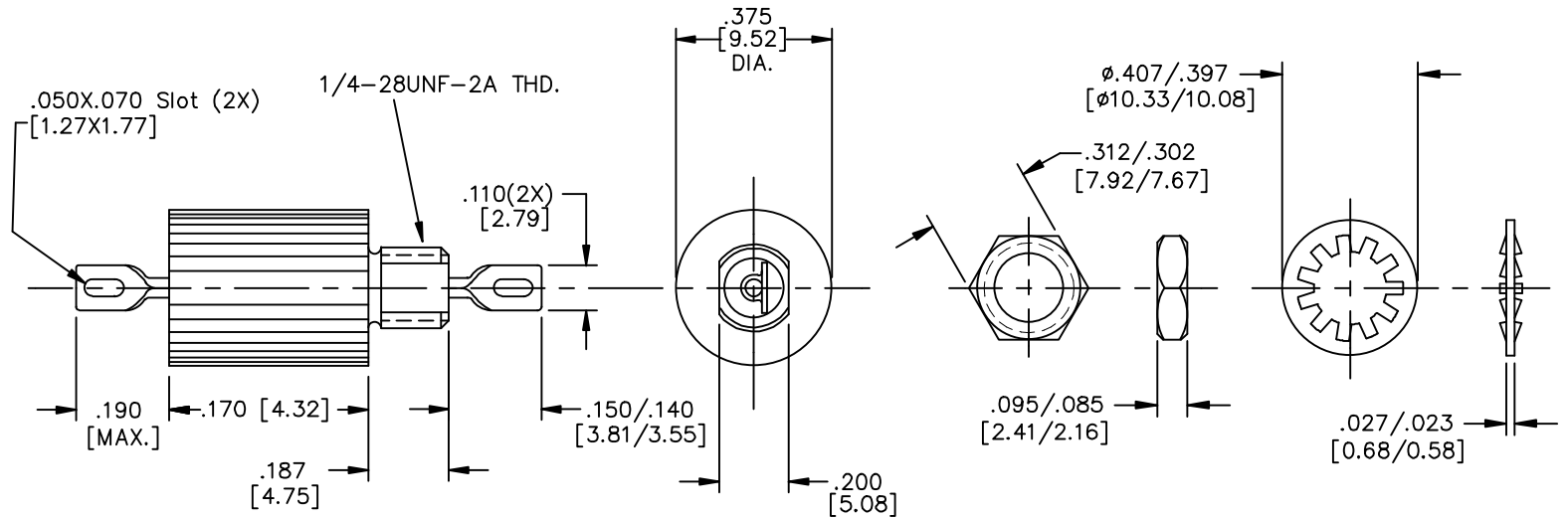


CASE FINISH	CURRENT (AMPS)	WORKING VOLTAGE				MAXIMUM DC RESISTANCE (OHMS)	MAXIMUM VOLTAGE DROP		REF. APPROX. CAP.	MIN. INSERTION LOSS PER MIL-STD-220, FULL LOAD, +25°C												
		-55°C TO +85°C		-55°C TO +125°C			DC	AC		14 KHz	30 KHz	50 KHz	75 KHz	100 KHz	150 KHz	300 KHz	500 KHz	1 MHz	10 MHz	100 MHz	1 GHz	10 GHz
		AC	DC	AC	DC					--	15	--	--	--	28	33	--	44	60	--	70	--
SOLDER	10	--	80	--	50	.008	.08	--	1.4uF	--	15	--	--	--	28	33	--	44	60	--	70	--

PART MARKING:
M15733/38-0005
L OLSP2 DATE CODE

PACKAGE MARKING:
M15733/38-0005
OLSP2
M# DATE CODE
50VDC @ 125°C 10A L2

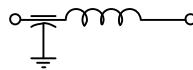
MARKING NOTES:
N/A



MTG. HARDWARE

THIS PART IS CODED "NCA". API TECHNOLOGIES, INC. DOES NOT HAVE CHANGE AUTHORITY. CUSTOMER APPROVAL REQUIRED BEFORE PRODUCT/PROCESS CHANGES CAN BE MADE.

SCHEMATIC



NOTES:

1) MOUNTING TORQUE NOT TO EXCEED 7in-lbs.

REV.	REV. NO.	DESCRIPTION	DATE	BY	CHKD.	APP'D.
54	53					
52	51					
51	50					
50	49					
49	48					
48	47					
47	46					
46	45					
45	44					
44	43					
43	42					
42	41					
41	40					
40	39					
39	38					
38	37					
37	36					
36	35					
35	34					
34	33					
33	32					
32	31					
31	30					
30	29					
29	28					
28	27					
27	26					
26	25					
25	24					
24	23					
23	22					
22	21					
21	20					
20	19					
19	18					
18	17					
17	16					
16	15					
15	14					
14	13					
13	12					
12	11					
11	10					
10	9					
9	8					
8	7					
7	6					
6	5					
5	4					
4	3					
3	2					
2	1					
1	0					

UNLESS OTHERWISE SPECIFIED DIMENSIONS ARE IN INCHES [MILLIMETERS]
DO NOT SCALE
THIRD ANGLE PROJECTION

api technologies corp. FAIRVIEW PENNSYLVANIA

DESCRIPTION Low Pass EMI Filter

CODE IDENT. NO. OLSP2

Sheet 1 of 1

