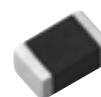


## Multilayer Power Inductors

Type: **ELGTEA**



### Features

- Superior DC current bias characteristics by the original laminating process technology
- Magnetic shielded structure
- Small and thin structure (2.0×1.25×1.0mm max.)
- RoHS compliant

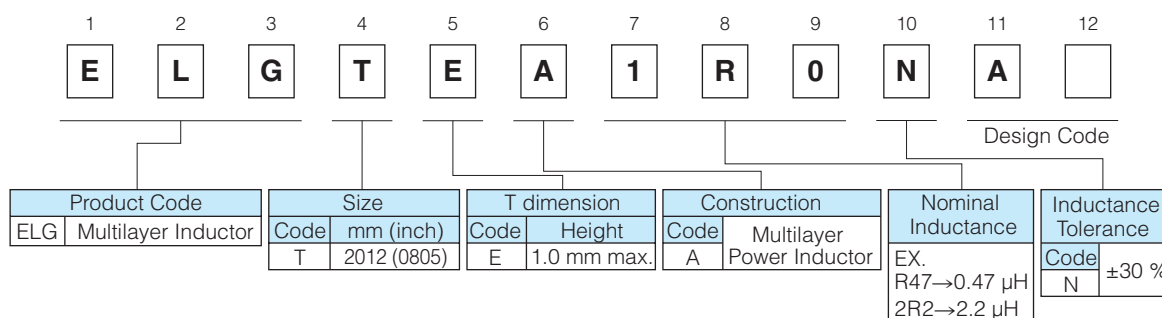
### Recommended Applications

- DC/DC converter circuit use of the small portable device  
Smart phone, mobile phone, DSC .

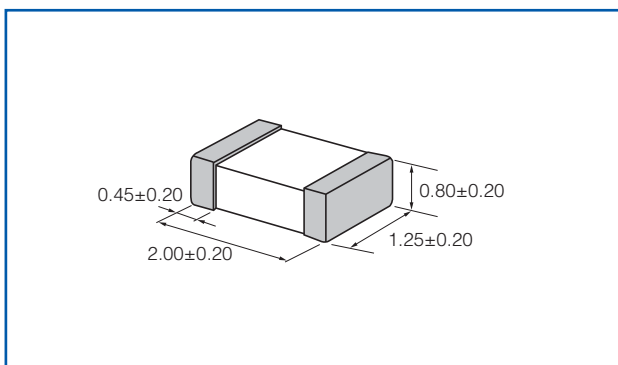
### Standard Packing Quantity

- 4000 pcs./Reel

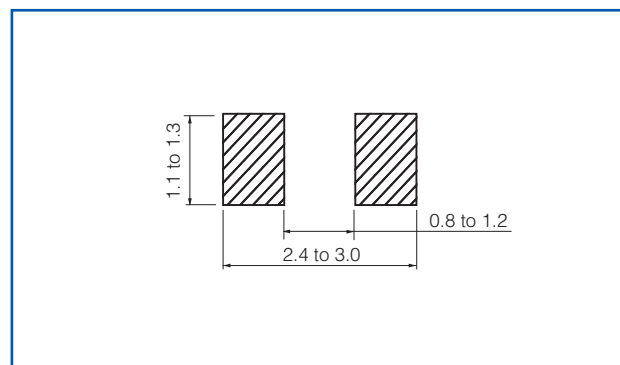
### Explanation of Part Numbers



### Dimensions in mm (not to scale)



### Recommended Land Pattern in mm (not to scale)



## Ratings and Characteristics

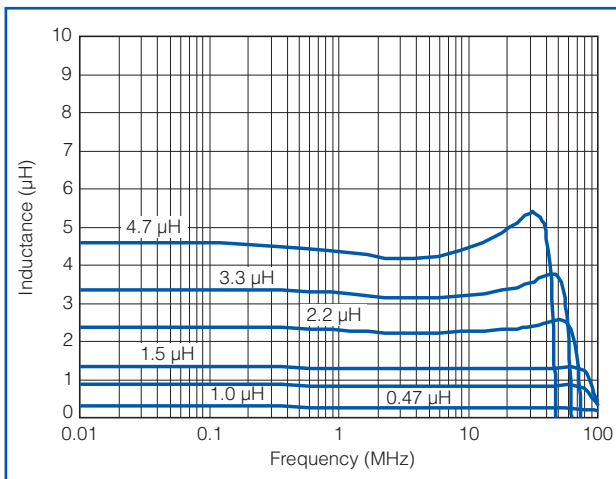
Part Number	Inductance at 1 MHz		DC Resistance at 20 °C (Ω) max.	Rated Current* <sup>1</sup> (A)	Self-resonant Frequency* <sup>2</sup> (MHz)
	(μH)	Tol.			
ELGTEAR47NA	0.47	±30 %	0.10	1.2	126
ELGTEA1R0NA	1.0	±30 %	0.15	1.0	80
ELGTEA1R5NA	1.5	±30 %	0.18	1.0	80
ELGTEA2R2NA	2.2	±30 %	0.20	0.8	55
ELGTEA3R3NA	3.3	±30 %	0.25	0.8	50
ELGTEA4R7NA	4.7	±30 %	0.30	0.8	33

● Operating Temperature Range : -40 to 125 °C (Including self-temperature rise)

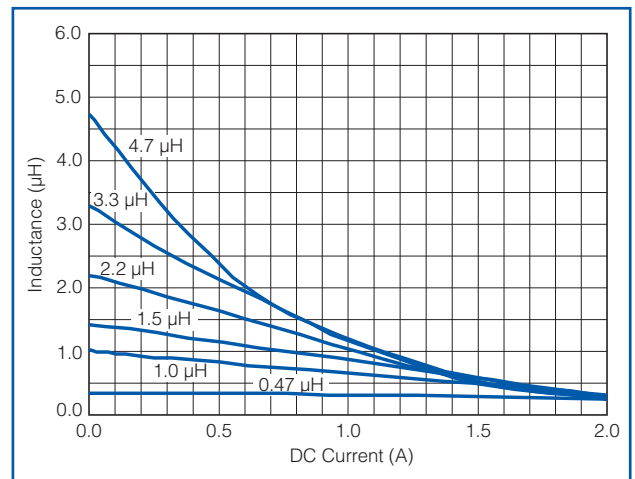
\*<sup>1</sup> This indicates the value of current when temperature rise dt/t=40 °C (at 20 °C).

\*<sup>2</sup> Reference data

## Inductance frequency characteristics

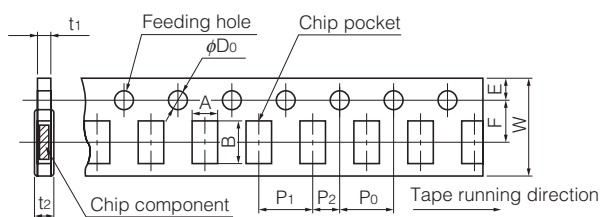


## DC current bias characteristics



## Packaging Methods (Taping)

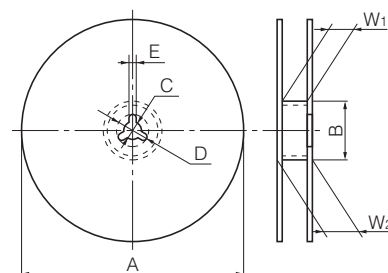
● Punched Carrier Taping (Pitch 4mm)



(Unit : mm)

Symbol	A	B	W	F	E	P <sub>1</sub>	P <sub>2</sub>	P <sub>0</sub>	φD <sub>0</sub>	t <sub>1</sub>	t <sub>2</sub>
Dim (mm)	1.65 ±0.20	2.4 ±0.2	8.0 ±0.2	3.50 ±0.05	1.75 ±0.10	4.0 ±0.1	2.00 ±0.05	4.0 ±0.1	1.5 +0.1/0	1.2 max.	1.4 max.

● Taping Reel

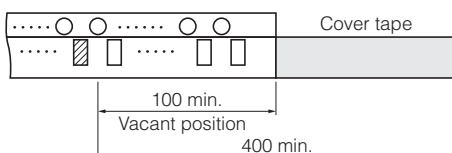


(Unit : mm)

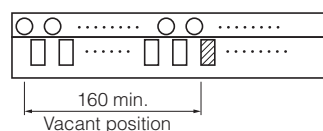
Symbol	φA	φB	C	D	E	W <sub>1</sub>	W <sub>2</sub>
Dim (mm)	180 <sup>0</sup> / <sub>-3</sub>	60.0 <sup>+1.0</sup> / <sub>0</sub>	13.0±0.5	21.0±0.8	2.0±0.5	9.0 <sup>+1.0</sup> / <sub>0</sub>	11.4±1.0

● Leader Part and Taped End

Leader part



Tape end



(Unit : mm)