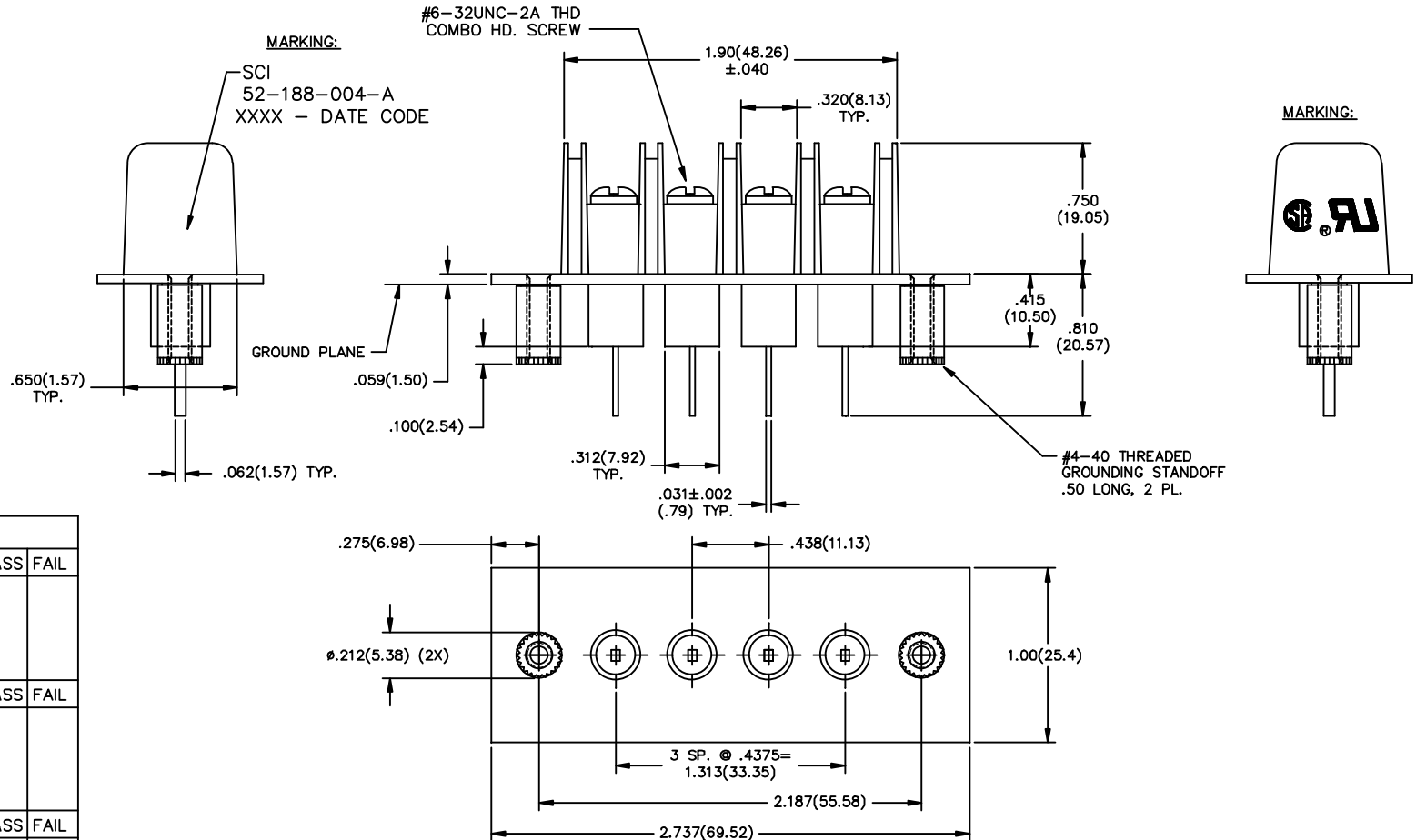



**NOTES:**

- 1) VOLTAGE: 100 VDC.
- 2) CURRENT: 20 AMPS.
- 3) OPERATING TEMPERATURE: -55°C TO +105°C.
- 4) MATERIAL: BLACK THERMOPLASTIC OR EQUIV.
- 5) SCREW TYPE: #6-32 COMBO HD./ZINC PLATED.
- 6) MARKING: 4 PT. CHARACTERS, WHITE INK.
- 7) D.C.RESISTANCE: 0.01 OHMS MAX.
- 8) SHIPPING TRAY MARKING:

SCI 52-188-004-A DATE CODE  
 100V, 20A, 12-22AWG  
 UL & CSA LOGOS



TEST SEQUENCE				
STEP 0400	94-4033-00	VISUAL/MECH	PASS	FAIL
PER IT 38-0468 INSPECT DIMENSIONS AND WORKMANSHIP. PER MIL-STD-105, LEVEL II, 1%AQL COMMENTS: 100%		OPER:		
STEP 0100	94-1002-00	CAP./D.F.	PASS	FAIL
PER IT 38-0245 CAP: 2500pF TO 5200pF DF. <4% MAX COMMENTS: 100%		OPER:		
STEP 0200	94-2005-00	DWV	PASS	FAIL
PER IT 38-0245 DWV: 2000 VDC 25°C 1 MINUTE MINIMUM COMMENTS: 100%		OPER:		
STEP 0300	94-2015-00	I.R.	PASS	FAIL
PER IT 38-0245 IR: 100VDC, 1000 Mohms MIN. 2 MINUTES MAX. COMMENTS: 100%		OPER:		

		11	REV. NO.	UNLESS OTHERWISE SPECIFIED	TOLERANCES UNLESS OTHERWISE SPECIFIED	 ERIE, FAIRVIEW PENNSYLVANIA Description FILTER TERMINAL BLOCK 52-188-004-A
		CN 200758	CHANGE NOTICE	DIMENSIONS ARE IN INCHES. (MILLIMETERS)	Fractions ± 1/64	
		REVISION		DO NOT SCALE.	Dec. .xxx ± .03	
					Dec. .xxx ± .020	
					Angles ±0° 30'	Date 3-8-01
					CODE IDENT. NO. DLSP2	App'd
						Sheet 1 of 1

Quality Products From The Specialists In Electro-Magnetic Compatibility