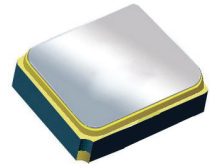


Surface Mount 915.00MHz SAW Filter



2.0 x 1.6 x 0.9 mm

AFS20A26-915.00-T3

Moisture Sensitivity Level (MSL) – This product is Hermetically Sealed and not Moisture Sensitive - MSL = N/A: Not Applicable



**RoHS
Compliant**

FEATURES:

- 2.0 x 1.6 x 0.9 mm low profile SMT package
- Low Insertion loss
- Excellent selectivity with high out-of-band rejection

APPLICATIONS:

- Wireless Communication
- Remote Control
- Cellular Phones

ELECTRICAL SPECIFICATIONS:

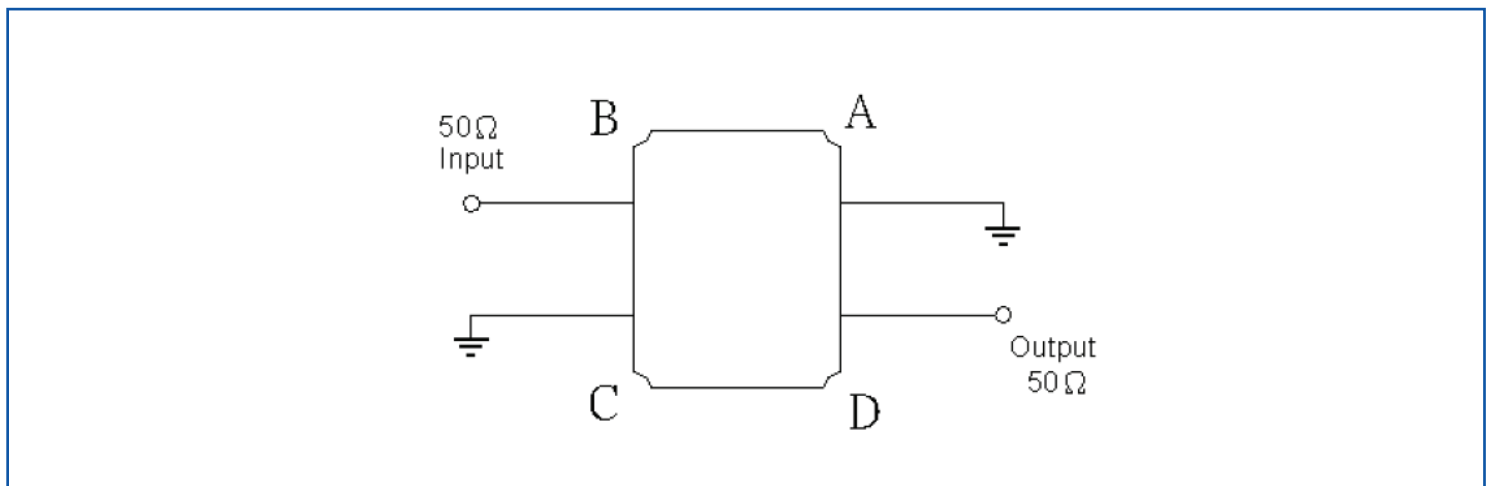
Maximum Ratings

Item	Value
Input Power Level	+15 dBm max.
DC Permissive Voltage	3V DC max.
Operating Temperature Range	-30°C to + 85°C
Storage Temperature Range	-40°C to + 85°C

Parameters	Minimum	Typical	Maximum	Units	Notes
Center Frequency (f_c)		915.00		MHz	
Insertion Loss (IL)		2.00	3.00	dB	902 ~ 928MHz
Effective Bandwidth		26		MHz	
Amplitude Ripple		0.80	1.50	dB	902 ~ 928MHz
Worst-Case Input / Output Return Loss		9.5	8.0	dB	902 ~ 928MHz
Stop-band Attenuation (Referenced to 0.0 dB)	40	55		dB	10MHz ~ 857.5MHz
	35	48			857.5MHz ~ 882.5MHz
	35	48			970MHz ~ 1005MHz
	45	52			1005MHz ~ 1110MHz
	30	35			1110MHz ~ 3000MHz
Source Impedance (Z_S)		50		Ω	See note # 1
Load Impedance (Z_L)		50		Ω	See note # 1

Note #1: No matching network required for operation into 50 Ω 's

TEST CIRCUIT:

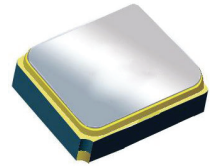


Surface Mount 915.00MHz SAW Filter

AFS20A26-915.00-T3

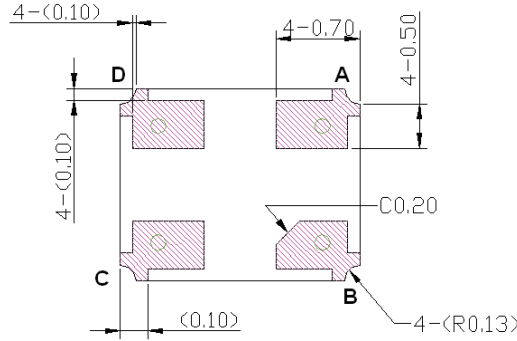
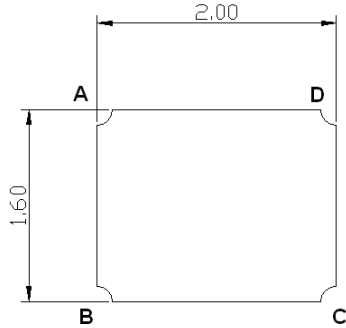


RoHS
Compliant

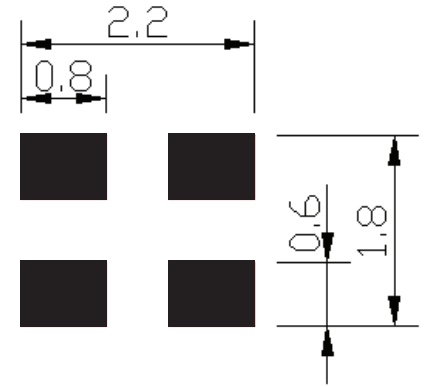


2.0 x 1.6 x 0.9 mm

OUTLINE DIMENSIONS:



Recommended Land Pattern:

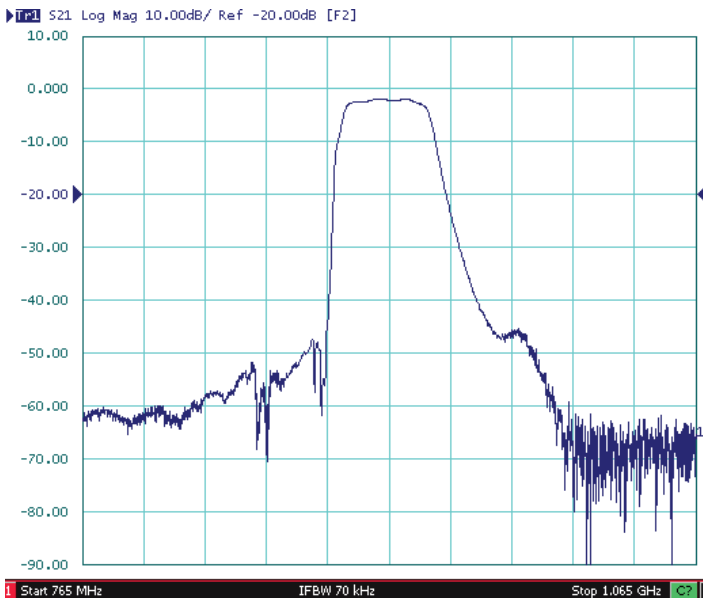


#B:	Input
#D:	Output
#A,C:	Ground
Unit:	mm

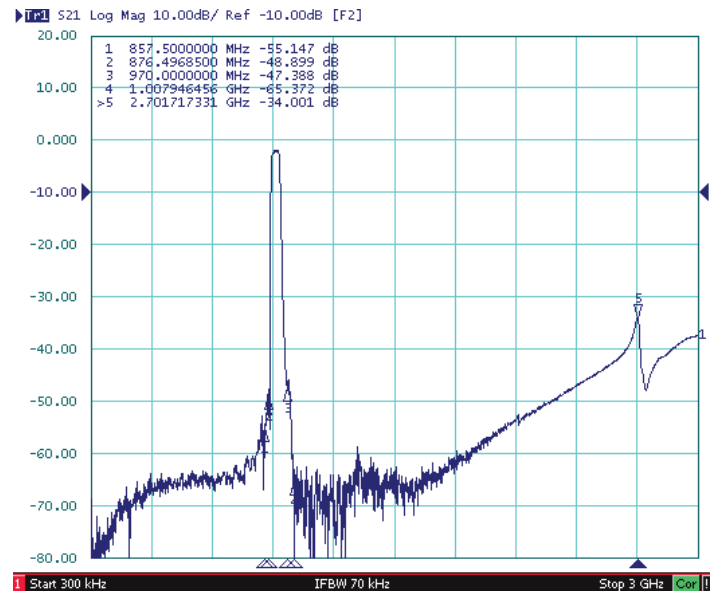
*All Dimensions are in mm

FREQUENCY CHARACTERISTICS:

Filter Frequency Response (Narrowband)



Filter Frequency Response (Wideband)

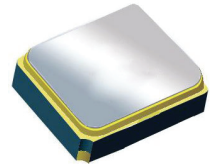


Surface Mount 915.00MHz SAW Filter

AFS20A26-915.00-T3

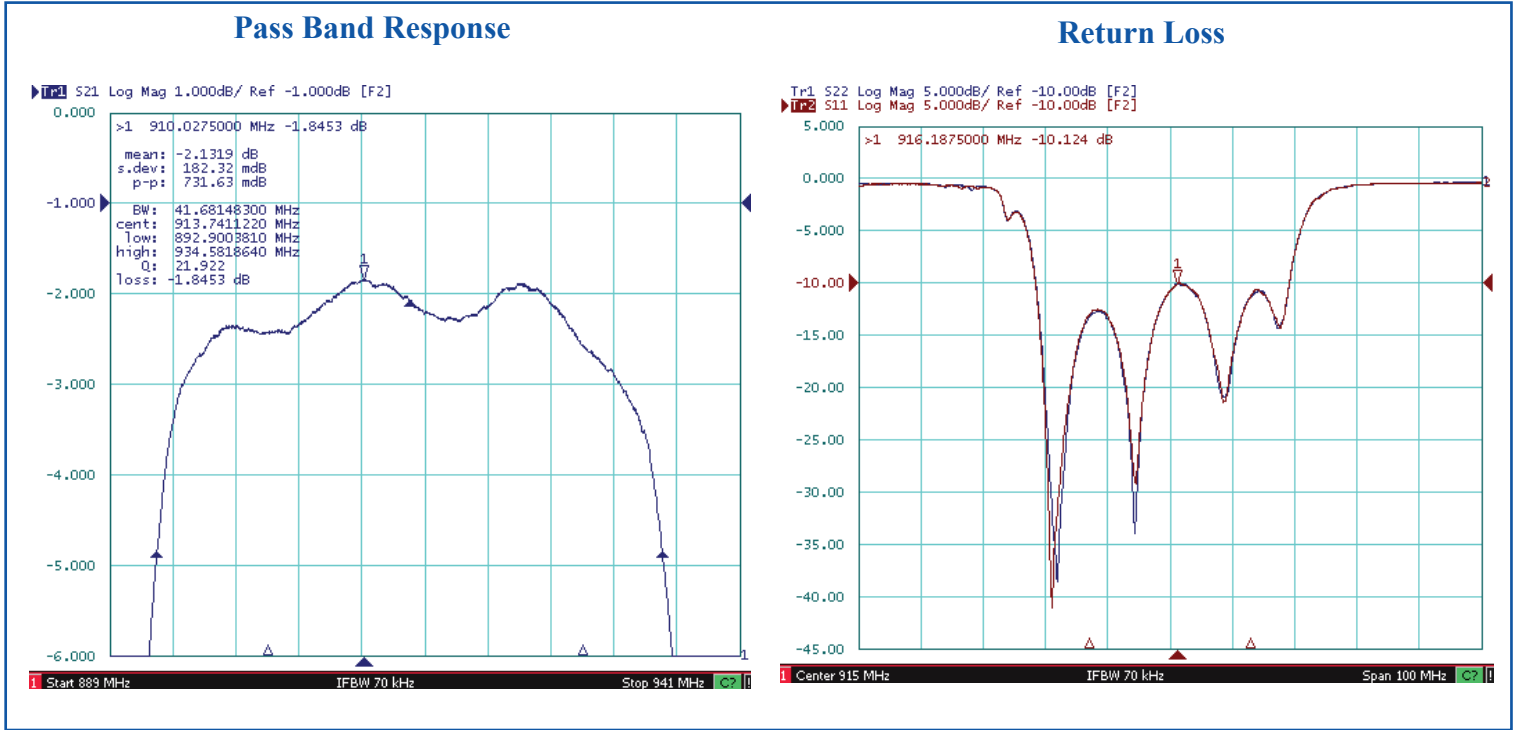


RoHS
Compliant

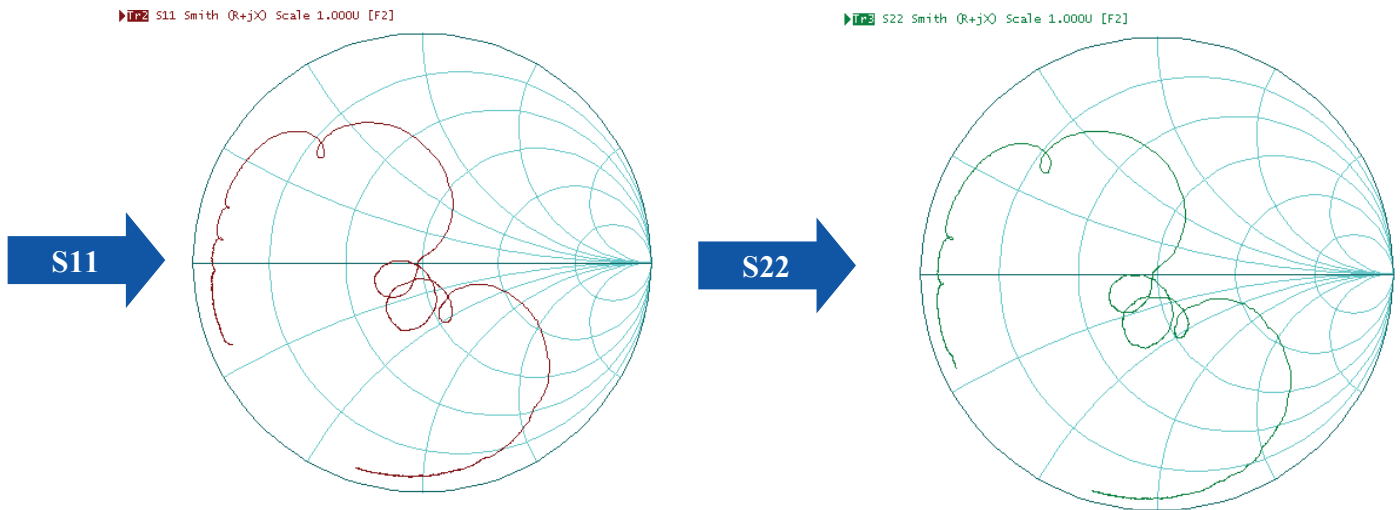


2.0 x 1.6 x 0.9 mm

FREQUENCY CHARACTERISTIC:



Reflection Functions:



Note # 2: Detail S parameter information (.s2p file) available upon request

ABRACON IS
ISO 9001:2008
CERTIFIED



ABRACON
CORPORATION

Visit www.abracon.com for Terms & Conditions of Sale
30332 Esperanza, Rancho Santa Margarita, California 92688
tel 949-546-8000 | fax 949-546-8001 | www.abracon.com

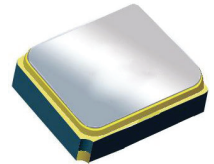
Revised: 04.16.13

Surface Mount 915.00MHz SAW Filter

AFS20A26-915.00-T3

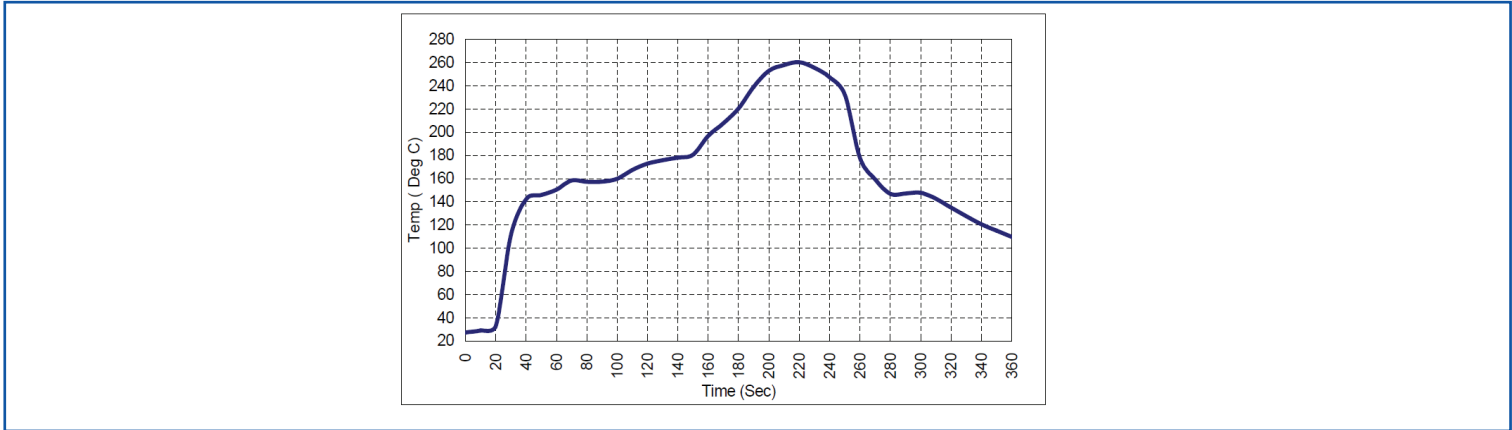


RoHS
Compliant

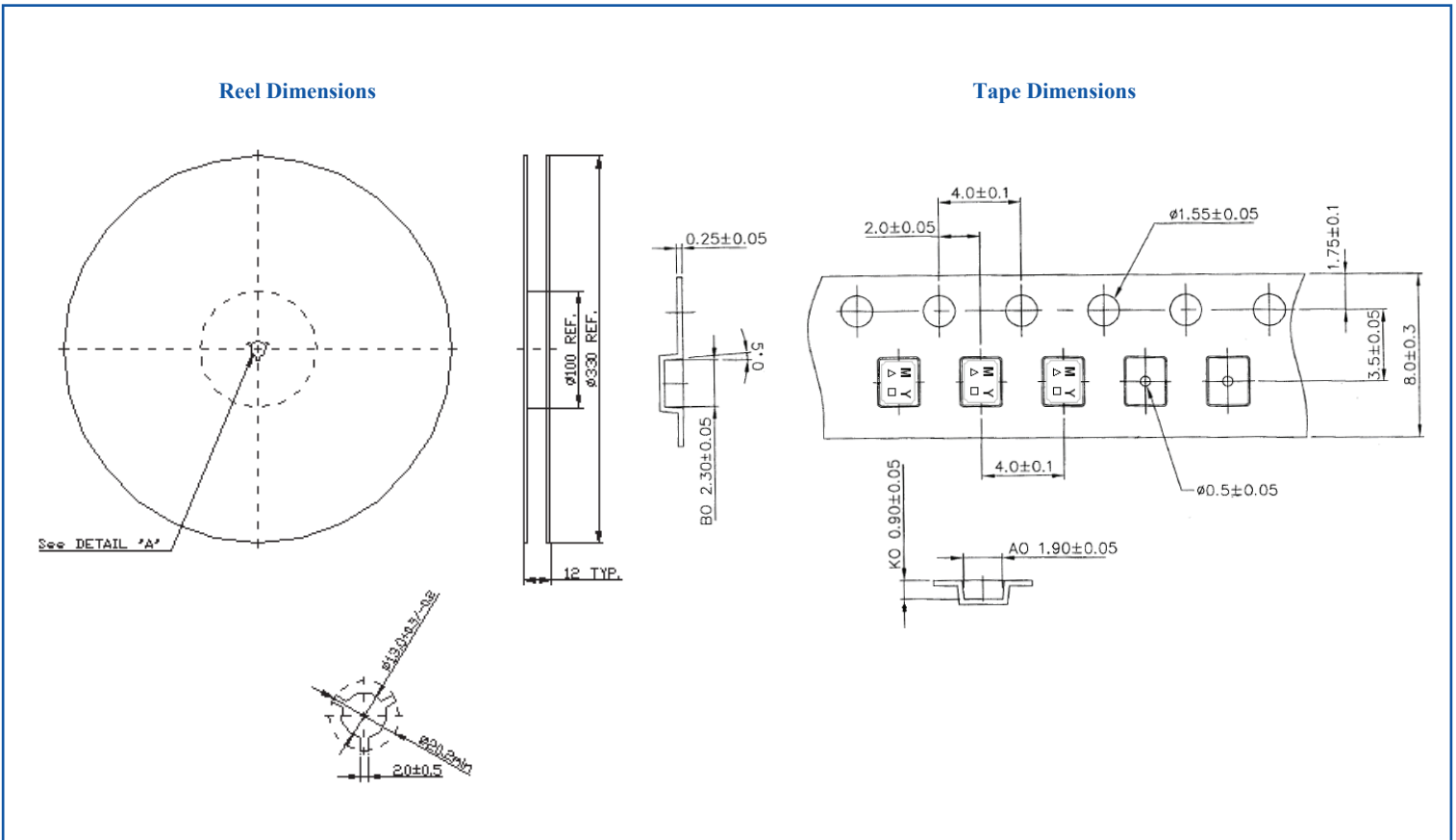


2.0 x 1.6 x 0.9 mm

REFLOW PROFILE:



PACKAGING: 3000 Units/Reel “-T2” parts (2k/reel) are no longer available effective 01/01/2013



ATTENTION: Abracon Corporation’s products are COTS – Commercial-Off-The-Shelf products; suitable for Commercial, Industrial and, where designated, Automotive Applications. Abracon’s products are not specifically designed for Military, Aviation, Aerospace, Life-dependant Medical applications or any application requiring high reliability where component failure could result in loss of life and/or property. For applications requiring high reliability and/or presenting an extreme operating environment, written consent and authorization from Abracon Corporation is required. Please contact Abracon Corporation for more information.

ABRACON IS
ISO 9001:2008
CERTIFIED



Visit www.abracon.com for Terms & Conditions of Sale
30332 Esperanza, Rancho Santa Margarita, California 92688
tel 949-546-8000 | fax 949-546-8001 | www.abracon.com

Revised: 04.16.13